

VILLAGE ESTATES

93 Main Road, Sidcup, Kent DA14 6ND

Tel: 0208 302 1002

www.village-estates.com

Email: sidcup@village-estates.com



SHARE OF FREEHOLD

GARAGE EN BLOC

OWNER OCCUPIERS ONLY

0.6 MILES > SIDCUP TRAIN STATION

VERY CLOSE TO HIGH STREET

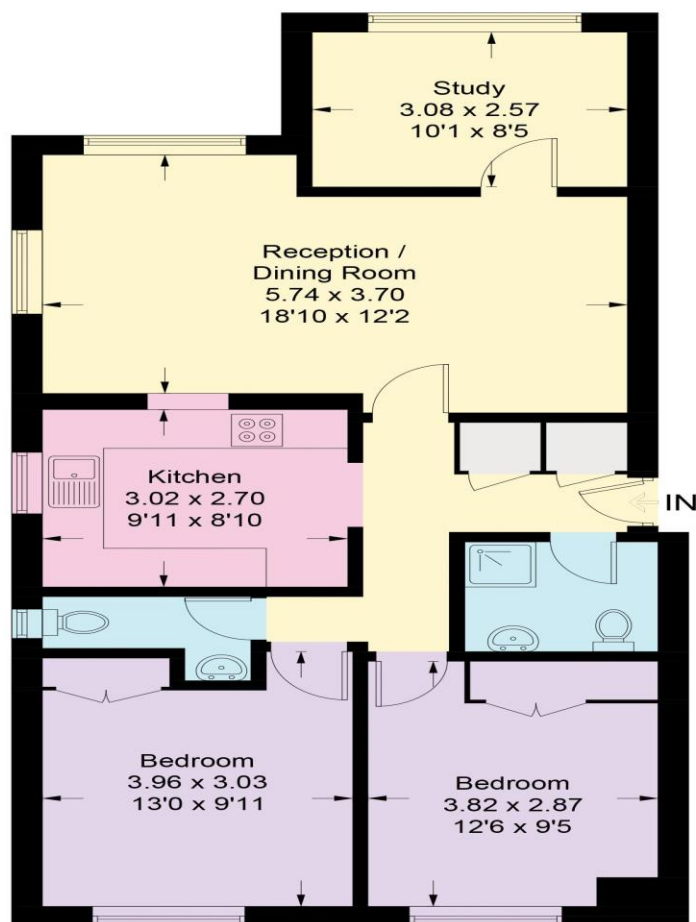
NO CHAIN



2 Janson Court
16 Granville Road
Sidcup, DA14 4BX

Guide Price £285,000-£295,000

Village Estates are pleased to present a two bedroom (potentially three bed) ground floor flat, part of a well maintained building that has the added benefit of a SHARE OF THE FREEHOLD. Offered with no forward chain, vacant possession, ready to move straight into.

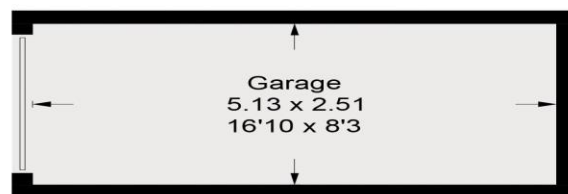


Ground Floor

Granville Road, DA14



Approximate Gross Internal Area
74.6 sq m / 803 sq ft
Garage = 12.9 sq m / 139 sq ft
Total = 87.5 sq m / 942 sq ft



(Not Shown In Actual Location / Orientation)

CURRENT ENERGY EFFICIENCY RATING 'C'

CONSUMER PROTECTION FROM UNFAIR TRADING REGULATIONS 2008

Please note that any services, heating system or appliances have not been tested, and no warranty can be given or implied as to their working order. You are advised to obtain verification from your solicitor or surveyor. References to the tenure of a property are based on information supplied by the seller. We have not had sight of the title documents and a buyer is advised to obtain verification from their solicitor. Items shown in photographs are not included unless specifically mentioned within the sales particulars, but may be available by separate negotiation. Whilst every attempt has been made to ensure the accuracy of the floor plan contained here, measurements of doors, windows, rooms and any other items are approximate and no responsibility is taken for any error, omission, or mis-statement. We advise you to book an appointment to view before embarking on any journey to see a property, and check its availability. The accuracy of these details are not guaranteed and they do not form part of the contract.